

DeVilbiss SmartCode® Remote Therapy Monitoring



DeVilbiss SmartCode
as displayed on
IntelliPAP

Simple, Easy and Free!

The DeVilbiss SmartCode is an effective and efficient way to remotely track adherence data. **With a simple phone call to the patient, providers or clinicians can obtain key adherence monitoring data.** Best of all, the **data is objective** as required by the new Medicare CPAP Local Coverage Determination (LCD).

The SmartCode feature is included in every DeVilbiss IntelliPAP® system **without additional cost or fees.**

Performance Features

- A simple phone call to the patient to retrieve the SmartCode will satisfy the new CPAP LCD requirements
 - No additional fees or equipment – SmartCode is built into each and every IntelliPAP System
 - Monitoring CPAP adherence via SmartCode is simple to integrate into your existing CPAP patient follow-up protocol
 - 1-day and 7-day codes allow you to contact the patient early in therapy to assess adherence and intervene if necessary.
 - Research has indicated the first two weeks of therapy are the most critical to establishing long-term adherence
- ### Now with Adherence Score
- The Adherence Score is a percentage of the best consecutive 30 days of usage that meet the CPAP LCD
 - For example, if within the last 30 days 22 of them were above the adherence threshold {4 hours or more of continuous use each night} and 8 days were below that adherence threshold, the Adherence Score would be 73.3% which would satisfy the CPAP LCD requirements for compliance
 - Shows the best adherence percentage achieved for any rolling period of 30 consecutive days of use within a 90-day time frame
 - The adjustable adherence threshold can be set to 4 or 5 hours with a default setting of 4 hours

Reporting Features

SmartCode uses a proprietary encryption method that allows therapy and usage data to be generated and compressed into onboard codes. Much like a barcode, each character generated in the SmartCode represents a data set. When the SmartCode generated by the IntelliPAP is entered into the SmartCode report generator, the series of characters is deciphered into usable data.

SmartCode provides summary data for pre-defined time frames, each representing a 'rolling window' of time.

There are two SmartCodes generated by the IntelliPAP Standard:

- SmartCode: (One report for 1, 7, 30 and 90 days and Adherence Score) Each time frame reports the following parameters:
 - % of Days at Least 4 or 5 Hours
 - Day Count
 - Days at Least 4 or 5 Hours
 - Average While Breathing Hours Per Day

	IntelliPAP Standard	IntelliPAP Standard Plus, AutoAdjust and Bilevel S
Available SmartCode		
SmartCode (includes Adherence Score)	x	
Smart Code Usage	x	x
1-day		x
7-day		x
30-day		x
90-day (includes Adherence Score)		x
Parameters Reported		
Days at Least 4 hours	x	x
% of Days at Least 4 hours	x	x
Day Count	x	x
Average Hours per Day While Breathing Hours	x	x
Percentile Pressure		x
Apnea/Hypopnea Index (AHI)		x
Pressure Plateau		x
High Leak Flow Time		x
Non-Responding Event Index (NRI)		x
Exhale Puff Index (EPI)		x

For complete definitions of terms visit www.intelliPAP.com under the Help button

- SmartCode Usage: Provides cumulative data since the start of therapy
 - Total While Breathing Hours (up to 4 years)
 - Total Days of Use (up to 3 years)

There are five SmartCodes generated by the IntelliPAP Standard Plus, AutoAdjust and Bilevel S:

- 1-Day SmartCode: Provides data for the last day of usage
- 7-Day SmartCode: Provides a summary of the last 7 days of usage
- 30-Day SmartCode: Provides a summary of the last 30 days of usage
- 90-Day SmartCode: Provides a summary of the last 90 days of usage plus Adherence Score
- SmartCode Usage: Provides cumulative data since the start of therapy
 - Total While Breathing Hours (up to 4 years)
 - Total Days of Use (up to 3 years)

Usage Threshold

The minimum amount of time the patient must use the device to be logged as a compliant day – can be set to 4 or 5 hours with default of 4 hours

Days at Least X Hours

Number of days where total usage is at least X hours a day based on Usage Threshold

% Days at Least X Hours

Percentage of days where the total usage within each day is at least X hours based on Usage Threshold

Day Count

Number of days measured within a timeframe i.e. if a 90-day code is collected at day 45 of therapy Day Count would be 45 days

Average Hours per Day While Breathing Hours

Total number of hours user has been breathing off the device

95th Percentile Pressure

AutoAdjust pressure was at or below this pressure 95% of the time

90th Percentile Pressure

AutoAdjust pressure was at or below this pressure 90% of the time

AHI

Apnea/Hypopnea Index represents the average number of apneas and hypopneas per hour

Pressure Plateau Time

Percentage of time the AutoAdjust spent at the upper pressure setting

High Leak Flow Time

Percentage of time where leak was above 95 liters per minute

NRI

Non-Responding Event Index represents the average number of non-responding (event that is detected but by design does not result in a pressure change) events per hour.

EPI

The Exhale Puff Index is the number of exhale puff events detected per hour

Design Features

Using SmartCode for Medicare Compliance

SmartCode is simple and efficient for both you and your patients. Just follow these three steps:

1. Call the patient and check their Adherence Score
2. If Adherence Score is acceptable, collect SmartCode
3. Use the online report generator to document adherence and therapy data

Easy to Use

Call the patient and walk them through the simple steps below.

IntelliPAP Standard Plus, AutoAdjust and Bilevel S

1. Make sure IntelliPAP is plugged in and turned on
2. Push the left-arrow twice
3. Read Adherence Score
(If Adherence Score is above 70% proceed with next steps, otherwise coach the patient and schedule a follow-up call)
4. Push the right-arrow once
5. Push the down-arrow three times until the 90-day code is displayed and read the code (optionally collect the other codes for comprehensive data)

IntelliPAP Standard

1. Make sure IntelliPAP is plugged in and turned on
2. Push the left-arrow twice
3. Read Adherence Score
(If Adherence Score is above 70% proceed with next steps, otherwise coach the patient and schedule a follow-up call)
4. Push the right-arrow once
5. Read the SmartCode

Go to www.intellipap.com/smartcode, and enter the code(s) to generate a report.



SmartCode Test Drive

Try out SmartCode today by visiting www.intellipap.com/smartcode and entering one or more of the following codes:

IntelliPAP Standard Sample Codes

- SmartCode: 16T-TCW5-2FK
- SmartCode Usage: ZDN-79FK-KFN

IntelliPAP Standard Plus Sample Codes

- 1-Day: FJ4F-3B3-3P2Q
- 7-Day: 3CCC-379D-7C20
- 30-Day: D0Y4-3D97-DP2L
- 90-Day: 7MTJT-4594-7DV2P
- SmartCode Usage: ZD3-79FK-K2V

IntelliPAP AutoAdjust Sample Codes

- 1-Day: F6CD-37F-357R
- 7-Day: 3CCC-377D-7J7X
- 30-Day: DWY4-3DB7-DJ7L
- 90-Day: 752TT-47DB-7DT7C
- SmartCode Usage: ZDN-79FK-K7H

IntelliPAP Bilevel S Sample Codes

- 1-Day: 46VV-37F-3AEH
- 7-Day: ACCV-V77D-76EJ
- 30-Day: 5WYV-VDB7-D6EQ
- 90-Day: H52TT-VWDB-7DREL
- SmartCode Usage: ZDN-79FK-KEZ

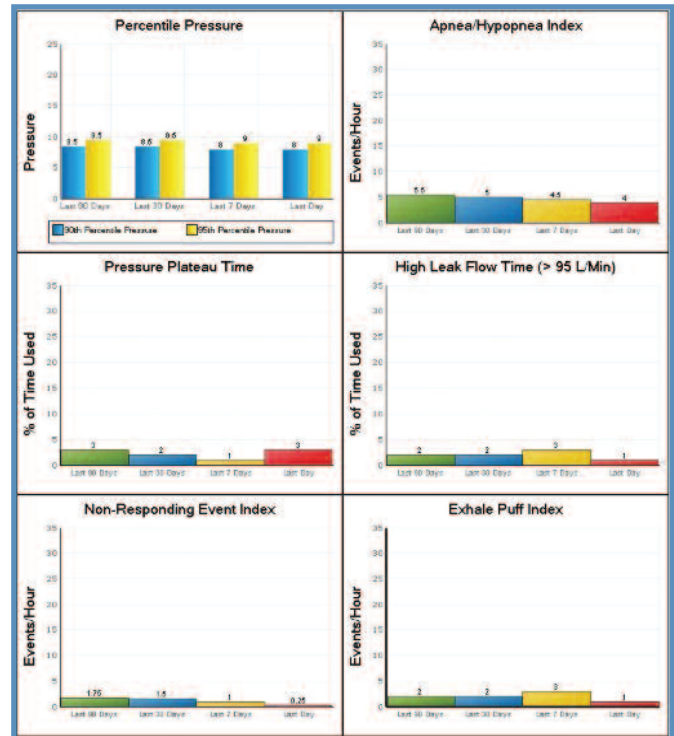
Patient Information		Device Information	
Name:		Serial Number:	HD001000
Street 1:		Prescription Pressure Setting(s):	
Street 2:		Humidification:	
City, State, Zip Code:		Interface:	
Phone:		Device Type:	IntelliPAP AutoAdjust
Date of Birth:		Date on Which Therapy Was Started:	
Pager:		Date Code Was Collected:	# Calendar Days in Report
ID:		Titration Mode:	AutoAdjust
Patient Record #:		Minimum Use Threshold:	# Hours

Provider Information		Referring Physician Information	
Company Name:	Homecare Concepts	Name:	
Street 1:	203 West Fairview	Group/Practice:	
Street 2:	Suite 100	Street 1:	
City, State, Zip Code:	Menville, NY 11747	Street 2:	
Contact Person:	Susan	City, State, Zip Code:	
		Phone:	
		E-mail:	

Comments				
	Last 90 Days	Last 30 Days	Last 7 Days	Last Day
% Days at least 4 hours	89%	73%	5%	32%
Day Count	90	30	7	1
Days at least 4 hours	82	22	6	1
50th Percentile Pressure	9.5	6.5	9.0	9.3
80th Percentile Pressure	9.5	6.5	8.0	9.3
APR	9.5	6.5	4.5	4.0
Pressure Plateau Time	3%	3%	1%	0%
High Leak Flow Time	2%	2%	3%	1%
NR	1.75	1.60	1.00	0.25
EPI	2	2	3	1
SmartCode	PLV-4703-TD1K	DEVA-0007-CK04	38CC-378D-7JVE	#J07-38F-0880
While Breathing Hours Last Day				5.6
Adherence Score	13% (2208)			

% Days at least 4 hours	Day Count	Days at least 4 hours	Average Hours Per Day	While Breathing Hours	SmartCode
89%	291	195	9.2	1482	28C-0C32-CK0

IntelliPAP AutoAdjust Summary Report Using SmartCode System



IntelliPAP AutoAdjust Bar Graph Reports Using SmartCode System

- Easy-to-use web-based report generator
 - HIPAA Compliant – no patient data is saved on our web servers. The website serves as a SmartCode decoder and allows you to generate and save or print reports
 - Usage data reported by SmartCode meets the CPAP LCD requirements
- Reports display data graphically and statistically

Technical Specifications

Internet Connection Required

Web Browser Compatibility:

Microsoft® Internet Explorer®, Mozilla®, Firefox®, Apple® Safari®

IntelliPAP Compatibility:

IntelliPAP Standard, IntelliPAP AutoAdjust, IntelliPAP Bilevel S



DeVilbiss Healthcare LLC | 100 DeVilbiss Drive | Somerset, PA 15501 USA
 800.338.1988 | 814.443.4881 | www.DeVilbissHealthcare.com